

Butterflies of Plattershill Woods



Brimstone

Likely to be a regular visitor. Larvae feed on Alder Buckthorn. Occurs in scrubby grassland and woodland. The butterfly ranges widely and can often be seen flying along roadside verges and hedgerows.



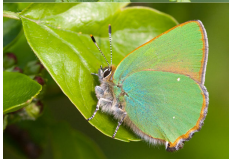
Comma

Found in open woodland and wood edges are the main breeding and hibernating habitats. **Seen on 2 July 2017**



Gatekeeper

Found where tall grasses grow close to hedges, trees or scrub. Typical habitats are along hedgerows and in woodland rides.



**Green
Hairstreak**

Occasionally seen nearby in Roman Woods. Many habitats including; woodland rides and clearings, and rough, scrubby grassland. Strongly associated with gorse and broom.



**Green-veined
White**

Likely to be an occasional visitor. Prefers damp areas with lush vegetation, where its various foodplants are found. It usually occurs in hedgerows, ditches, ponds, damp meadows, and woodland rides and edges.



**Grizzled
Skipper**

Maintain and improve a sparse habitat with a high density of Agrimony, Creeping Cinquefoil, Wild Strawberry and Bugle in a varied height sward, with bare patches to create hot spots.



Large Skipper

It is found in a wide variety of habitats where there are shrubs, tall herbs, and grasses, for example; woodland rides and clearings, pastures, roadside verges, and hedgerows. **Seen on 2 July 2017**



Large White

This common butterfly is found in a variety of habitats. **Seen on 2 July 2017**



Meadow Brown

Our most common UK butterfly. Found in many grassy places. **Seen in abundance on 2 July 2017**



Orange-tip

Spring butterfly (April to June) that feeds on Cuckooflower and Garlic Mustard. Prefers damp habitats such as meadows, woodland glades, hedgerows and the banks of streams and rivers.



Peacock

Likely to be a regular visitor. Larvae feed on nettle.



**Purple
Emperor**

Retain and increase numbers of sallows of a varied age mix within woodlands, with crown in full or partial shade. Seen nearby on 1 July 2017 in Roman Woods.



Purple Hairstreak

Look for the Purple Hairstreak in the evening at the top of oak trees in full sunshine. **Seen on 2 July 2017**



Red Admiral

Likely to be an occasional visitor. Larvae feed on nettle. **Seen on 2 July 2017**



Ringlet

Found in woodland rides and glades and damp grassland where grasses are lush and tall (it likes damp situations with partial shade). **Seen on 2 July 2017**



Silver-washed Fritillary

Likes broadleaved woodland, especially oak woodland and woodlands with sunny rides and glades. **Seen in abundance on 2 July 2017**



Small Tortoiseshell

Likely to be a regular visitor. Larvae feed on nettles.



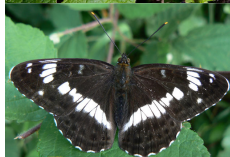
Small White

Likely to be a regular visitor. **Seen on 2 July 2017**



Speckled Wood

Lives in areas of dappled sunlight (similar to the pattern on the wings). It seems to prefer slightly damp areas where there is tall grass. **Seen on 2 July 2017**

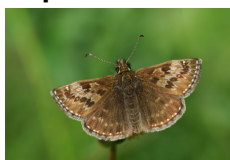


White Admiral

Maintain and improve woodlands supporting spindly, trailing growths of honeysuckle in dappled shade, with nearby sources of flowers (e.g. brambles). Ensure Honeysuckle is not lost during management work to widen rides, create scallops etc. **More than 10 seen on 2 July 2017**

Potential, occasional visitors: Essex Skipper, Small Skipper, Clouded Yellow, Dark Green Fritillary, Marbled White, Small Heath, Brown Argus, Brown Hairstreak, Common Blue, Small Blue, Small Copper, Painted Lady, Holly Blue

Aspirations for Plattershill Woods & Roman Woods



Dingy Skipper

Maintain, enhance and extend a sparse sward containing long stems of Common Bird's-foot Trefoil with patches of bare ground and abundant nectar plants such as Bugle.



White-letter Hairstreak

Encourage flowering, suckering regrowth Elm trees; and coppice a proportion of these Elm trees every year, on a ten year cycle. Plant disease resistant Elms in sunny sheltered spots but do not coppice them.



Wood White

Maintain and improve abundance of larval foodplants (Meadow Vetchling, Bitter-vetch, Tufted Vetch, Common and Greater Bird's-foot-trefoil) in a sunny and sheltered habitat, by cutting part on a rotational basis.